

PRIME RETAIL SPACE FOR RENT AT MENARA ETIQA TWINS

LEVEL : Level 3, Retail Podium
RENTAL : MYR 7.00/ft² | MYR 36,239/month
SIZE : 5,177 ft²
REMARKS : Ideal for Gymnasium

LEVEL4 : Level 3, Retail Podium
RENTAL : MYR 7.00/ft² | MYR28,700/month
SIZE : 4,100 ft²
REMARKS : Ideal for F&B

Located in the heart of KL City Centre, MENARA ETIQA TWINS consists of two 27-storey towers, Tower 1 and Tower 2, featuring a 4-level Retail Podium Block and a 5-level basement car park. The property is surrounded by prominent KL landmarks such as the KL Convention Centre, Impiana Hotel, Marc Service Residence, One KL, and many more. Suria KLCC Mall is just a stone's throw away.

Public Transport Accessibility:

- 10 mins walk to KLCC LRT Station
- 10 mins walk to Raja Chulan Monorail Station
- 14 mins walk to Bukit Bintang MRT Station
- 1 min walk to Green Line KL Free Bus Station

Take advantage of this prime retail space and ensure your business benefits from high visibility and seamless connectivity within a bustling hub.

Contact Amy Ho @ +6012-332 1188 to schedule a viewing today!

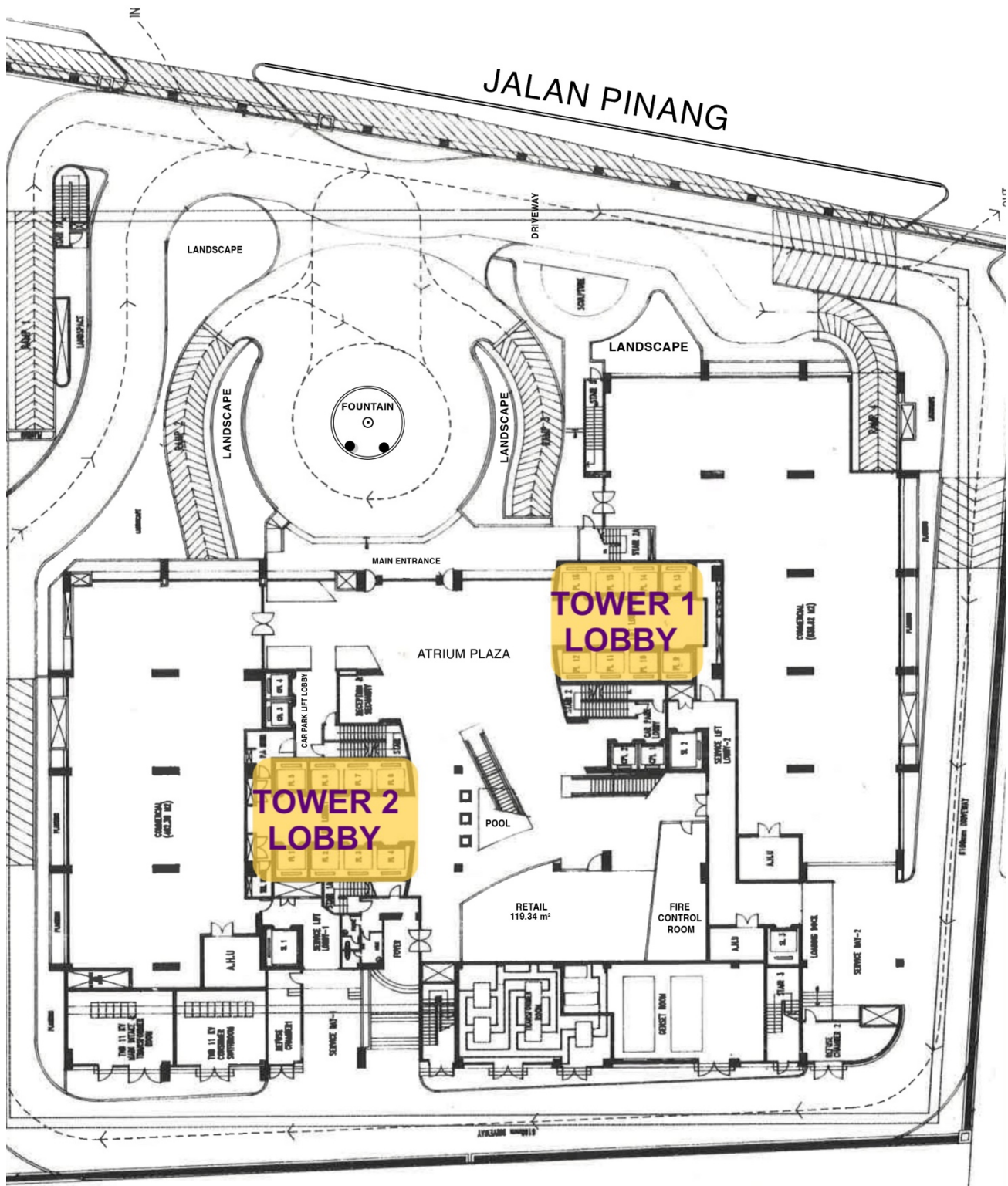


From the desk of Amy Ho

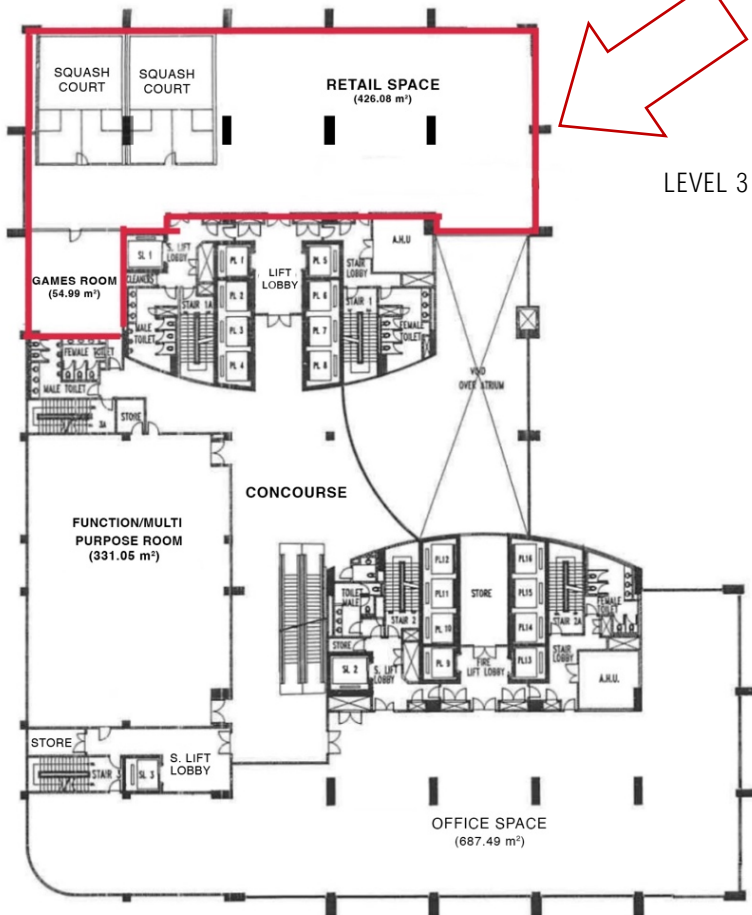
DROP-OFF ZONE AND LOBBY LOFT LOBBY



ETIQA TWINS – 2 TOWER WITH CONNECTED RETAIL PODIUM



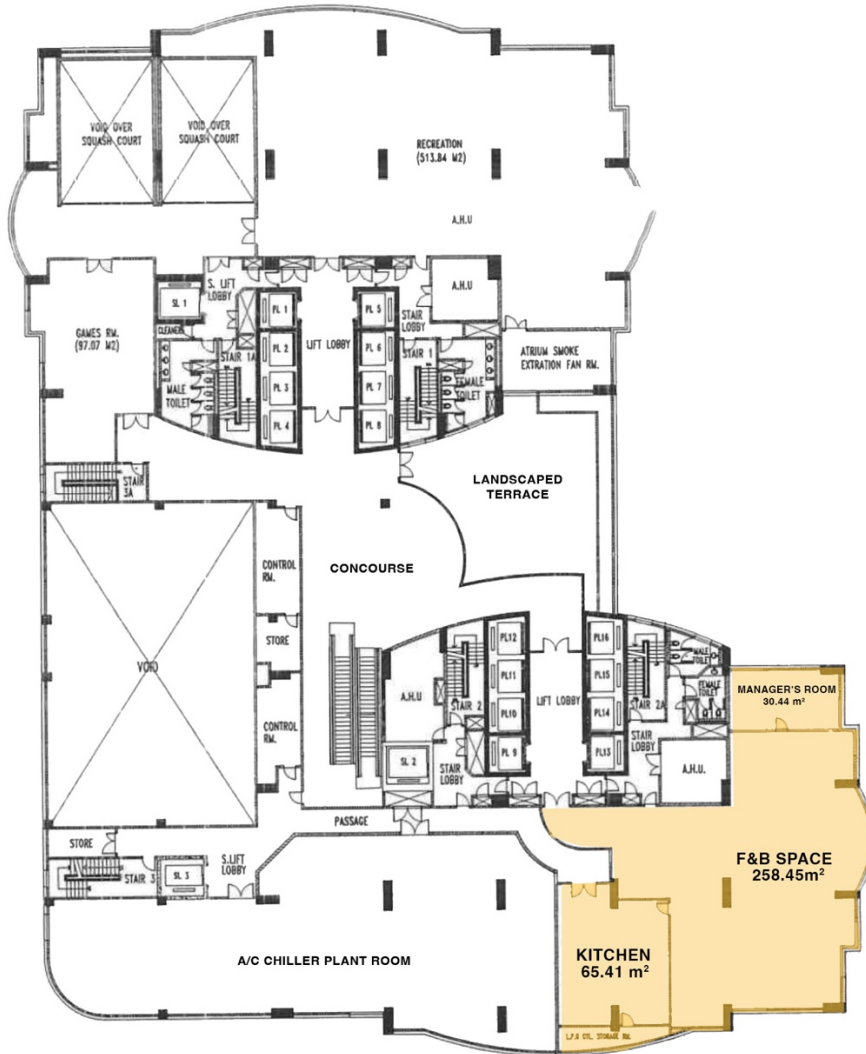
LEVEL 3 RETAIL PODIUM – IDEAL FOR GYMNASIUM



LEVEL 3 RETAIL PODIUM

LEVEL 4 – F&B SPACE

PODIUM LEVEL 4 PLAN (TOWER 2)



LOCATION & KLCC-BUKIT BINTANG PEDESTRIAN WALKWAY SYSTEM

