

From the desk of Amy Ho

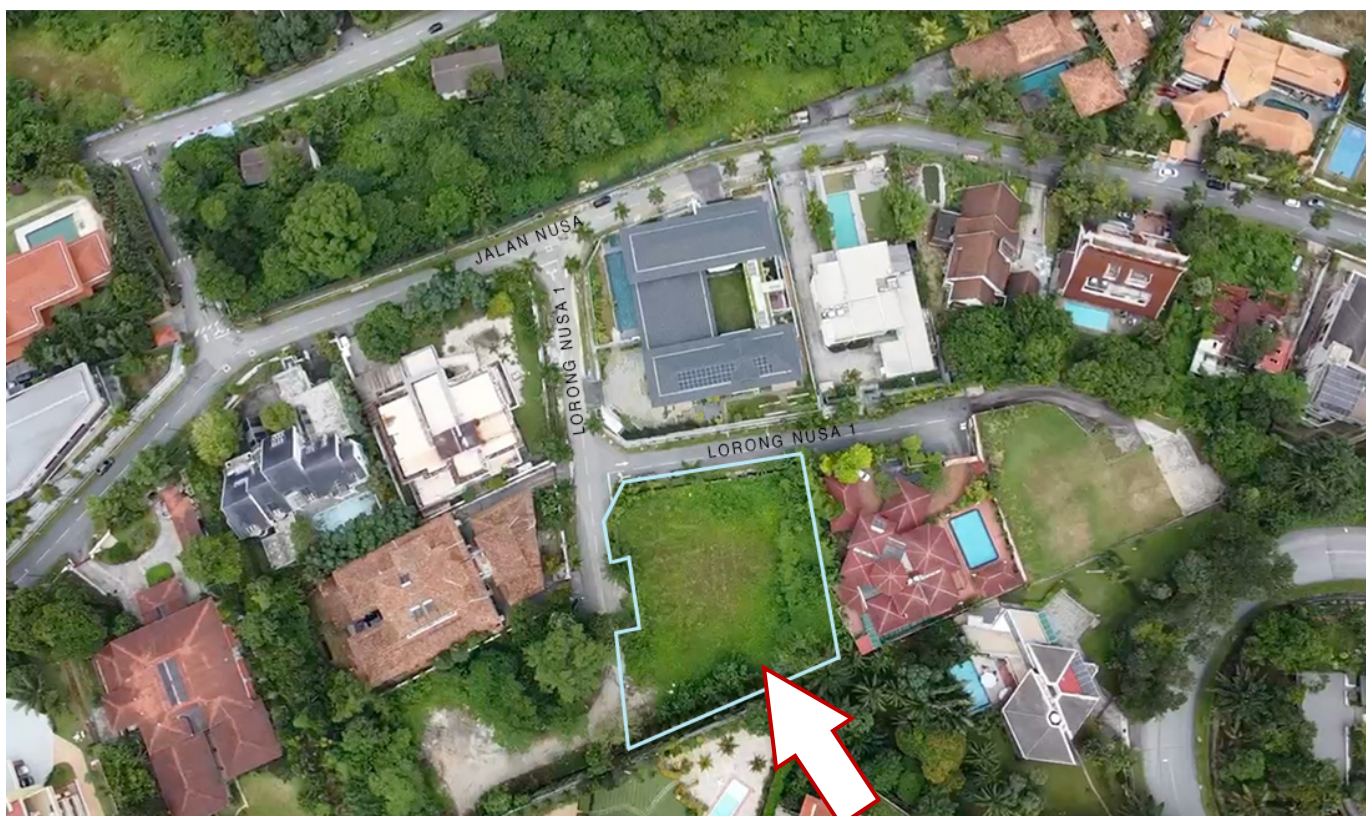
For Sale: Exceptional Flat Land in a guarded location in Bukit Tunku

Location : No 1 (Lot 28131), Lorong Nusa 2, Taman Duta, Bukit Tunku, 50480, Kuala Lumpur
Land Size : 2,006.194 mtr² | 21,594 ft²
Asking Price : MYR 15,000,000
Tenure : Freehold

This prime land parcel is situated at the quiet junction of Lorong Nusa 1 and Lorong Nusa 2 in Bukit Tunku. The plot features elevated, flat terrain in a guarded location, making it ideal for your dream home.

Land in Bukit Tunku is primarily on sloping terrain, and it is very rare to find flat land, especially in an elevated position. Additionally, the parcel's location in a quiet and guarded area makes it one of the most premium plots available in Bukit Tunku.

For more information and to schedule a site visit, please contact Amy Ho at 012-332 1188.



From the desk of Amy Ho

AERIAL VIEW AND LOCATION

GUARDHOUSE

