

*From the desk of Amy Ho*

**For Sale: 7.4 Acres Mixed Development Land @ Jalan Puchong, Mukim Petaling, Kuala Lumpur**

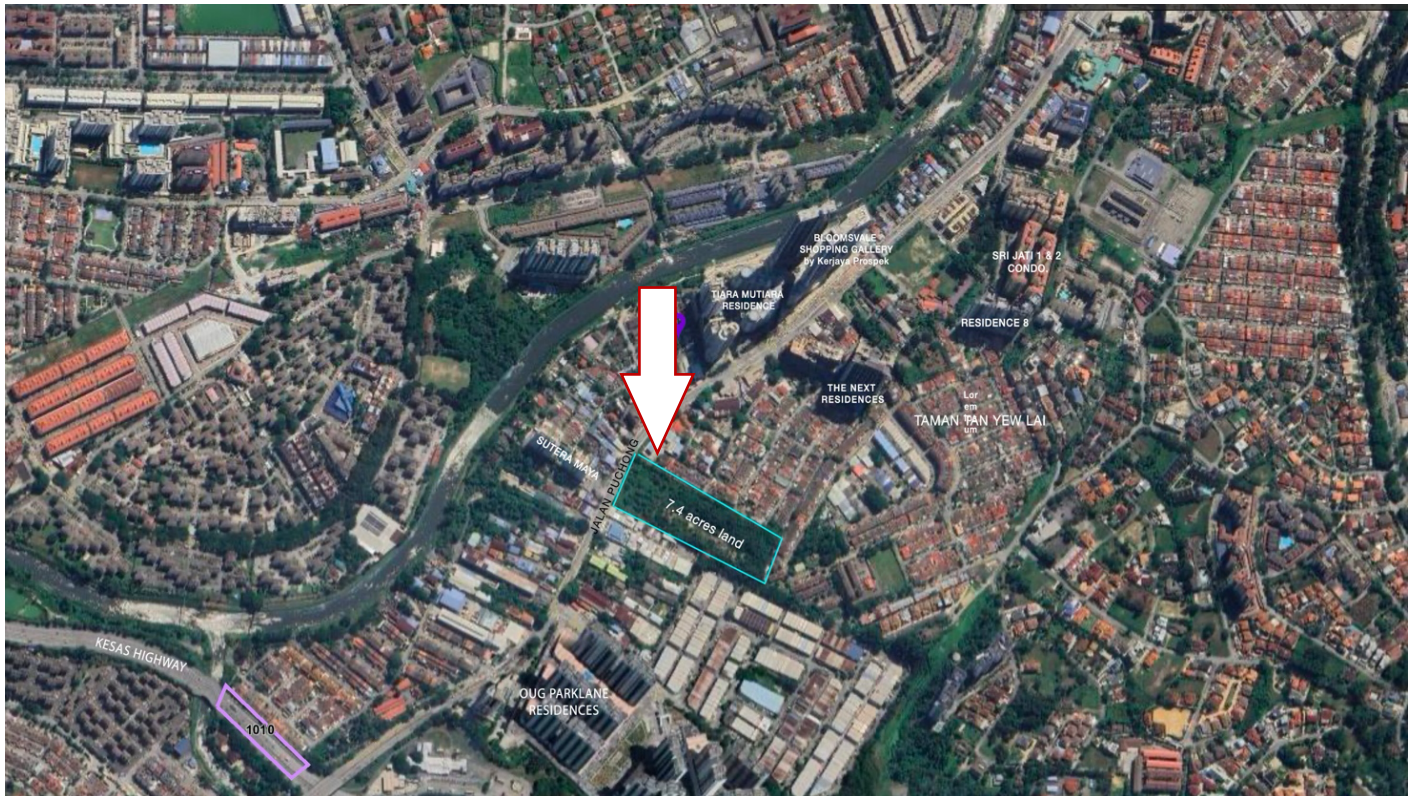
Asking Price : MYR 145,000,000 | MYR 450 per sq. ft.

Location : Jalan Puchong, Kuala Lumpur

Land Size : 7.4 acres

Land Type : Agriculture. Zoned Mixed Development

Tenure : Freehold



**Overview:**

Presenting a unique investment opportunity in Kuala Lumpur—a substantial 7.4-acre freehold land parcel, zoned for mixed development along Jalan Puchong. This property is amongst the last sizeable undeveloped plots in an otherwise densely developed area, offering vast potential for high-value projects.

**Strategic Location:**

Situated on a crucial artery of Kuala Lumpur, Jalan Puchong connects Jalan Klang Lama to the northwest with Kesas Highway to the east. Its proximity to Sungai Klang further enhances this location's strategic importance, ideal for significant commercial or residential development.

**Neighboring Developments:**

The site is encircled by several prominent developments within a 2 km radius, such as The Bloomsvale Shopping Gallery, Tiara Mutiara complexes, Residence 8, Sutera Maya, Parklane OUG, The Nest Residence, and Sri Jati Condominiums. This vibrant neighborhood ensures a continuous influx of potential customers and residents.

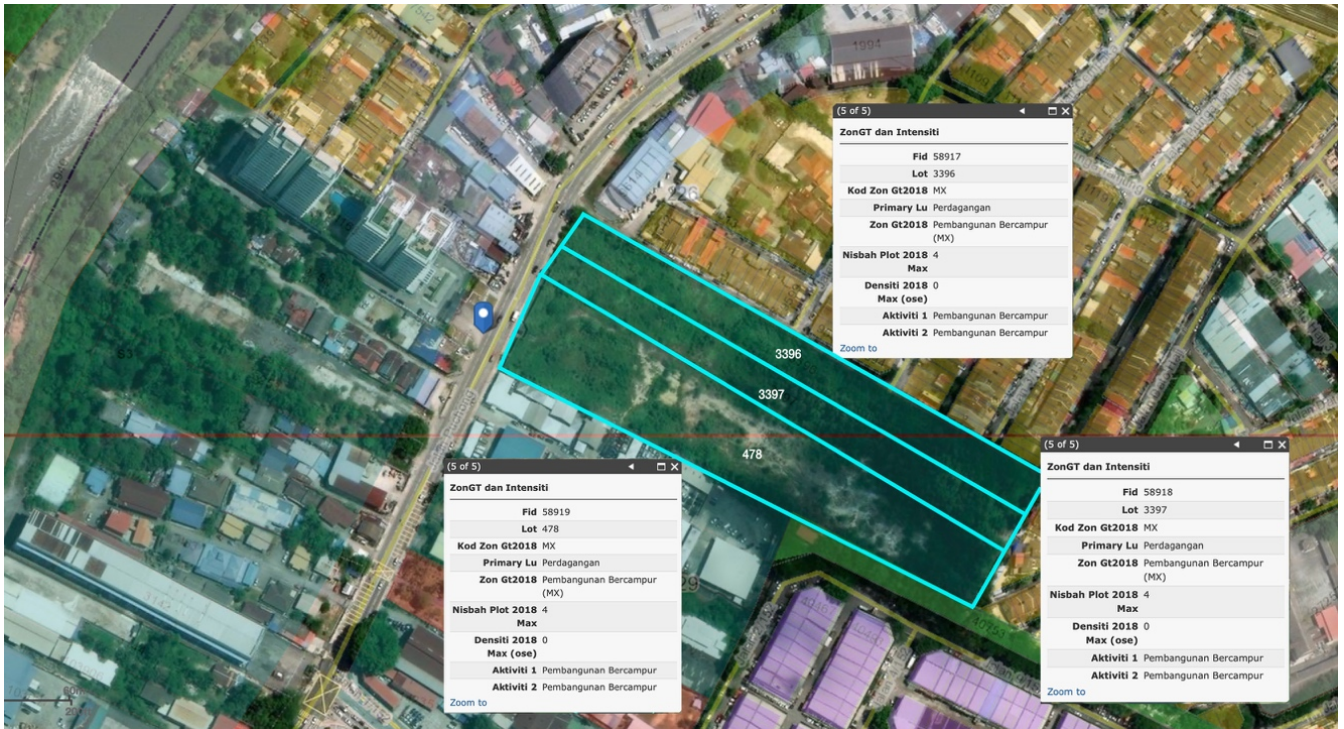
**Accessibility and Connectivity:**

The property provides seamless access to major urban centers, with Mid Valley City only 8 km away, Pavilion Bukit Jalil 5 km, and KLCC 15 km, facilitating easy connectivity for future developments.

**Current Status:**

The land is currently vacant, secured with zinc sheet site hoardings, and ready for development.

Contact Amy Ho @ +6012-3321188 to schedule a viewing today.



Immediate Vicinity



Sutera Maya Condominium, located opposite the subject land

*From the desk of Amy Ho*



Jalan Puchong Batu 6 1/4. The land is on the Right of this picture



Jalan Puchong, Kuala Lumpur  
The land in on the Left of this photo, shown here with the zinc sheets hoardings