

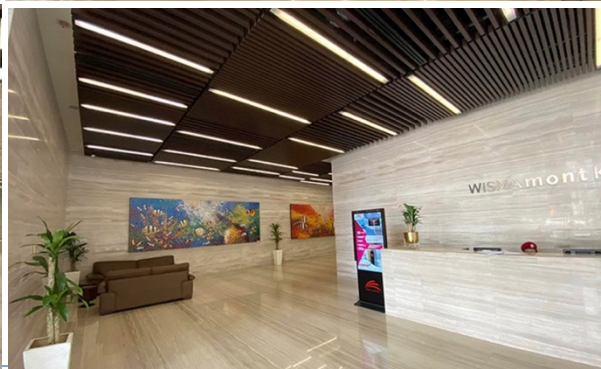
From the desk of Amy Ho

FOR RENT: PREMIUM OFFICE SPACE AT WISMA MONT KIARA @ JALAN KIARA, KUALA LUMPUR

Discover the epitome of premium office space at Wisma Mont Kiara, strategically located within the vibrant township of Mont Kiara and prominently positioned along Jalan Kiara, offering excellent visibility in the coveted Mont Kiara neighborhood.

This prestigious building features 16 storeys of Grade A Office Space, boasting a total lettable area of 182,579 square feet. What sets Wisma Mont Kiara apart is its seamless integration with the adjacent 1MK Mall, providing tenants with direct access to six floors of retail and dining establishments, creating a dynamic and convenient work environment.

Contact Amy Ho @ +6012-3321188 to schedule a viewing appointment today!



Availability & Rental Rate

Unit No	Level	Size ft ²	Furnishing	Rental/ft ²	Rental/Month
5.02A	Level 5	1,869	Fully Furnished	MYR 5.00	MYR 9,345
7.02A	Level 7	1,869	Partly Fitted	MYR 4.50	MYR 8,411
7.03	Level 7	3,775	Partly Fitted	MYR 4.50	MYR 16,988
8.02	Level 8	2,800	Partly Fitted	MYR 4.50	MYR 12,600
9.02	Level 9	2,800	Bare Unit	MYR 4.50	MYR 12,600
9.02A	Level 9	1,869	Bare Unit	MYR 4.50	MYR 8,411
9.03	Level 9	3,775	Bare Unit	MYR 4.50	MYR 16,988
11.02	Level 11	2,800	Partly Fitted	MYR 5.00	MYR 14,000
11.03	Level 11	3,775	Fully Furnished	MYR 7.00	MYR 26,425
18.01 & 02	Level 18	5,600	Fully Furnished	MYR 5.50	MYR 30,800
19.01	Level 19	11,797	Fully Furnished	MYR 5.50	MYR 64,884

Dynamic Office Spaces:

- 16 floors dedicated to office spaces offer a canvas for businesses to create layouts tailored to their unique needs.
- Spaces range from a cozy 1,866 ft² to expansive 11,797ft².
- Fitted with 2' x 4' ceiling board finishes.

Retail Podium:

- Four levels host a myriad of retail options, ensuring both convenience and variety.

Connectivity & Accessibility:

- Direct links to major highways including the Sprint Highway, NKVE, Penchala Link, Kerinchi Link, and Jalan Duta.

Features:

- 24/7 security fortified by CCTV surveillance and card access control with turnstile.
- Centralized air-conditioning with the added benefit of flexible air-conditioning for extended hours.
- Convenient drop-off points, with P2 & P3 zones shared by visitors and a dedicated P3A zone for season pass holders.
- Integrated with 1 Mont Kiara Mall which boasts diverse F&B outlets, retail shops, a supermarket, and is within walking distance to banking facilities.
- Spacious parking options, both in the basement and elevated areas. Applications for P2 Basement & P3A Season Pass can be initiated at the 1MK management office, subject to availability.
- MRT feeder bus routes to Pusat Bandar Damansara MRT enhance the commuting experience.

From the desk of Amy Ho

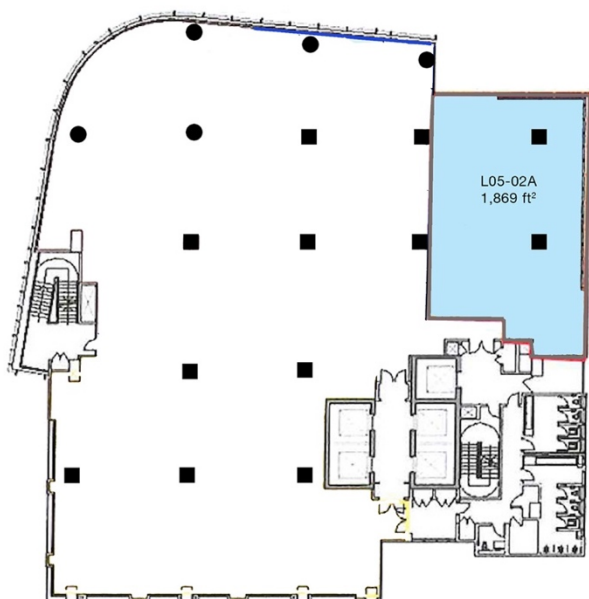
FULLY FURNISHED OFFICES

Unit No. : 5-02A, Level 5

Size : 1,869 ft²

Rental : MYR 9,345/month | MYR 5.00/ft²

Furnishing : Fully Furnished



FLOOR PLAN

From the desk of Amy Ho

Unit No. : 11.03, Level 11

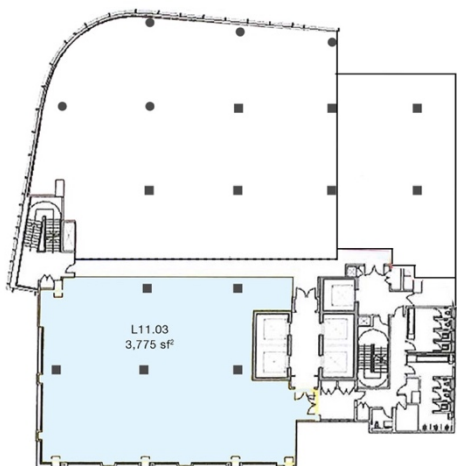
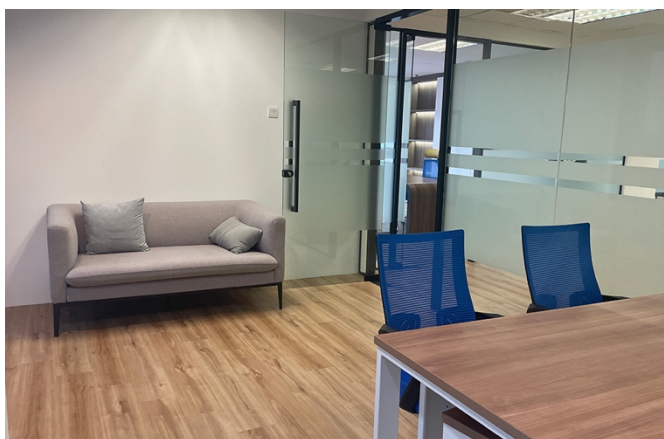
Size : 3,775 ft²

Rental : MYR 26,425/month | MYR 7.00/ft²

Furnishing : Fully Furnished



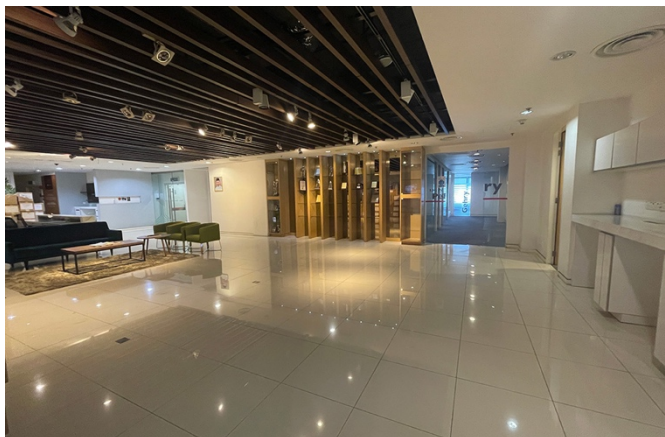
From the desk of Amy Ho



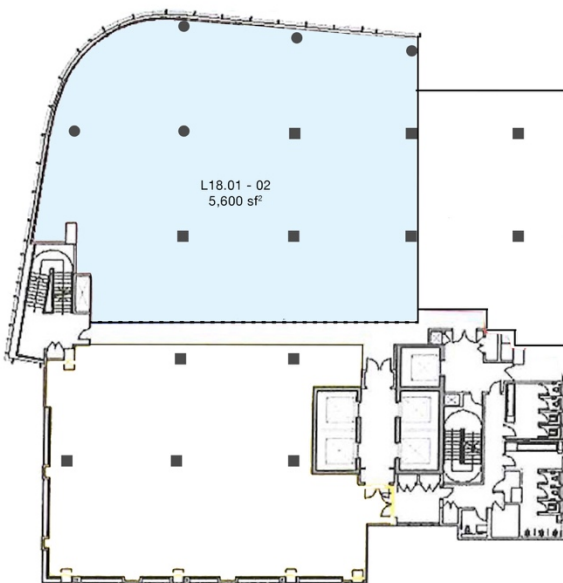
- Reception Counter
- 1 Meeting Room (10 pax)
- 4 Director/Manager Rooms
- 6 Cubicle Workstation
- Collaboration Area
- Internal Wet Pantry
- Wall & Filing Cabinets

From the desk of Amy Ho

Unit No. : 18.01-02, Level 18
Size : 5,600 ft²
Rental : MYR 30,800/month | MYR 5.50/ft²
Furnishing : Fully Furnished



From the desk of Amy Ho

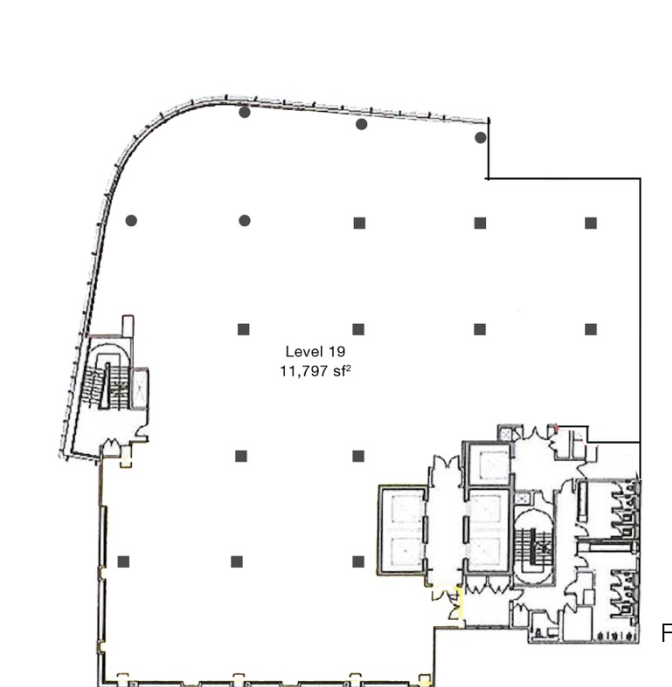
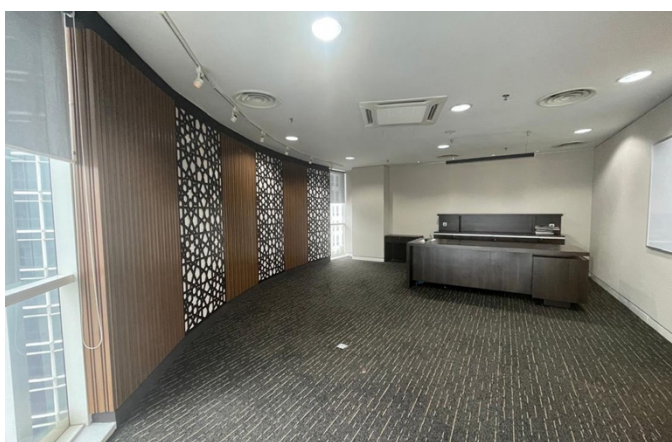


From the desk of Amy Ho

Unit No. : 19.01, Level 19
Size : 11,797 ft²
Rental : MYR 64,884/month | MYR 5.50/ft²
Furnishing : Fully Furnished



From the desk of Amy Ho



FLOOR PLAN

From the desk of Amy Ho

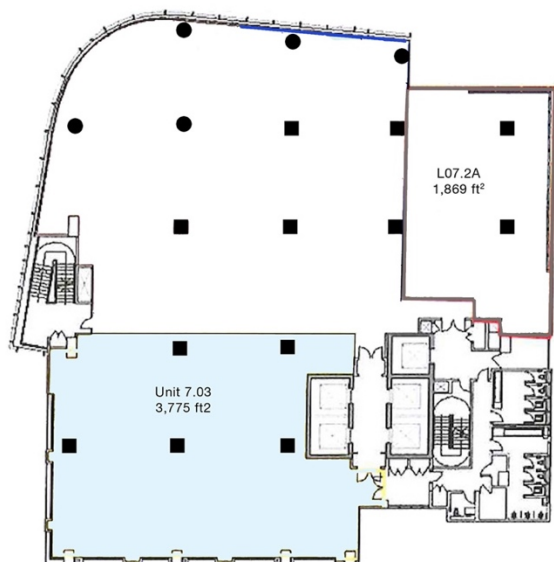
PARTLY FURNISHED OFFICES

Unit No. : 7-03, Level 7

Size : 3,775 ft²

Rental : MYR 16,988/month | MYR 4.50/ft²

Furnishing : Partly Fitted



FLOOR PLAN

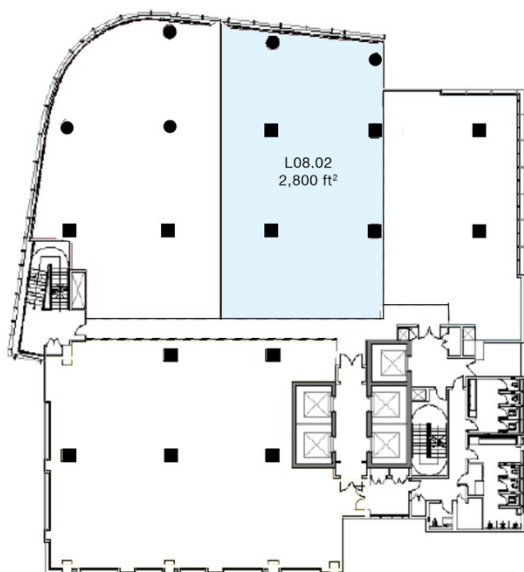
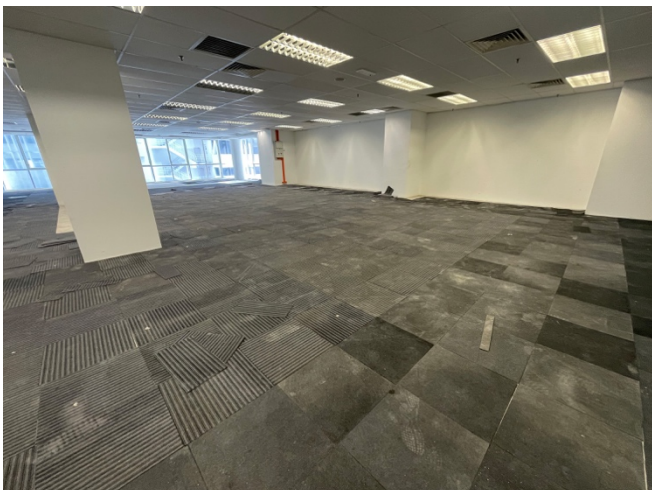
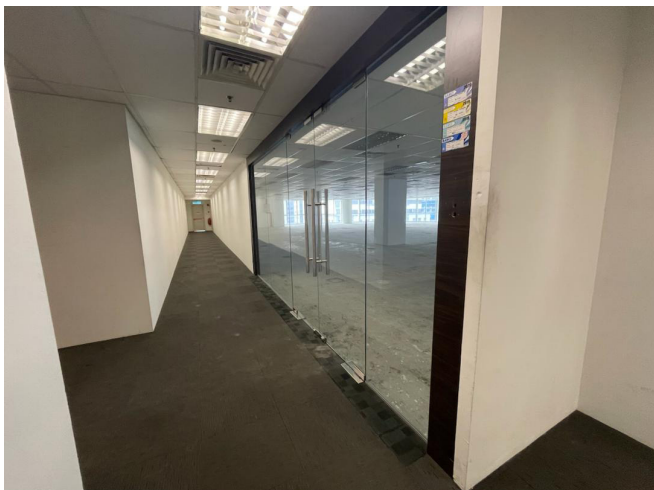
From the desk of Amy Ho

Unit No. : 8.02, Level 8

Size : 2,800 ft²

Rental : MYR 12,600/month | MYR 4.50/ft²

Furnishing : Partly Fitted



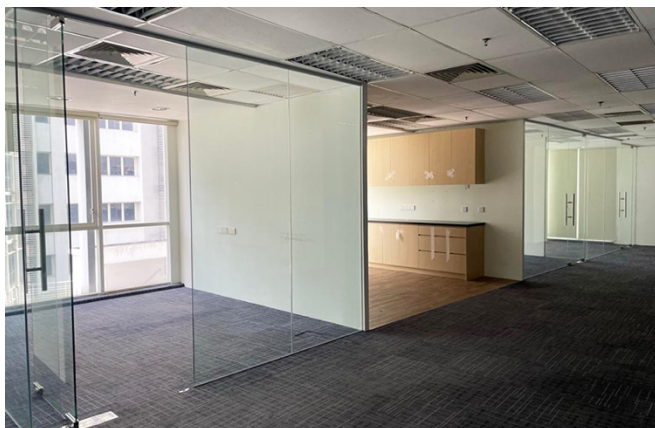
From the desk of Amy Ho

Unit No. : 11.02, Level 11

Size : 2,800 ft²

Rental : MYR 14,000/month | MYR 5.00/ft²

Furnishing : Partly Fitted



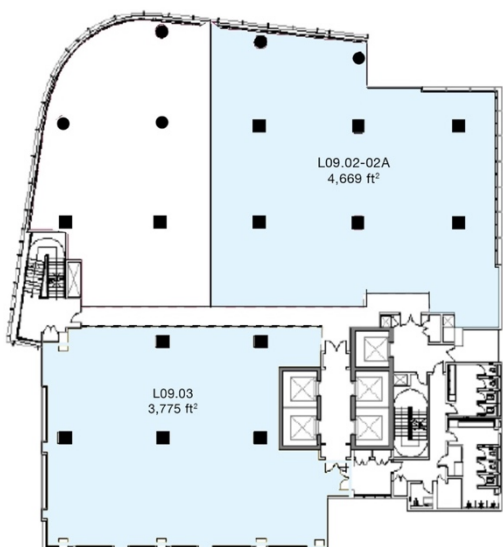
BARE UNITS

Unit No. : 9,02 & 02A, Level 9

Size : 4,669 ft²

Rental : MYR 21,011/month | MYR 4.50/ft²

Furnishing : Bare unit



FLOOR PLAN

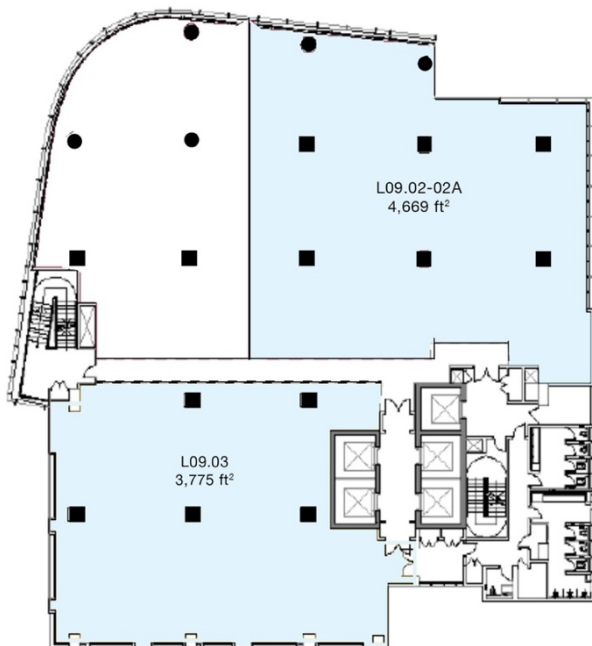
From the desk of Amy Ho

Unit No. : 9,03, Level 9

Size : 3,775 ft²

Rental : MYR 16,988/month | MYR 4.50/ft²

Furnishing : Bare unit



From the desk of Amy Ho

CARPARK

No of Bays : 1,385 bays. P2 & P3 shared with Visitors and P3A for Season Pass

Floating : MYR 220.00 per bay/month incl. SST

Reserved : MYR 350 per bay/month incl SST

CENTRALIZED AIR-CONDITIONER OPERATION HOURS:

- Monday – Friday: 9:00 am – 6:00 pm
- After Hours: RM 150.00 per hour

Contact Amy Ho to schedule a viewing today!

Amy Ho

☎ +6012-3321188

✉ amyho@amyho.co

www.amyho.co/commercial-rental

Zack Realty | E(3)0258