

From the desk of Amy Ho

BANGUNAN AHP @ Jalan Tun Mohd Fuad 3, Taman Tun Dr Ismail

MYR 5.50 per sq. ft.

Situated in the dynamic community of Taman Tun Dr. Ismail, Bangunan AHP @ TTDI is a newly renovated 4-story office complex that stands as a beacon of modernity amidst a bustling middle to upper-class neighborhood. Not only does it enjoy the advantage of being just 800 meters away from the Taman Tun MRT Station, but it also offers unparalleled convenience and accessibility.

Adding to its appeal are two floors exclusively dedicated to premium food and beverage outlets, serving as an attractive amenity for both staff and visitors alike. With diverse culinary options, from casual eateries to fine dining, the complex creates a vibrant hub that extends beyond standard workspaces.

When it comes to parking, the complex surpasses expectations with its ample outdoor and basement parking options, alleviating one of the most common challenges faced in urban office settings.

Overall, Bangunan AHP @ TTDI combines the best in location, amenities, and design, making it an excellent choice for businesses looking to establish themselves in a thriving community.

Contact Amy Ho at +6012-332 1188 to schedule a viewing today!

AVAILABILITY CHART

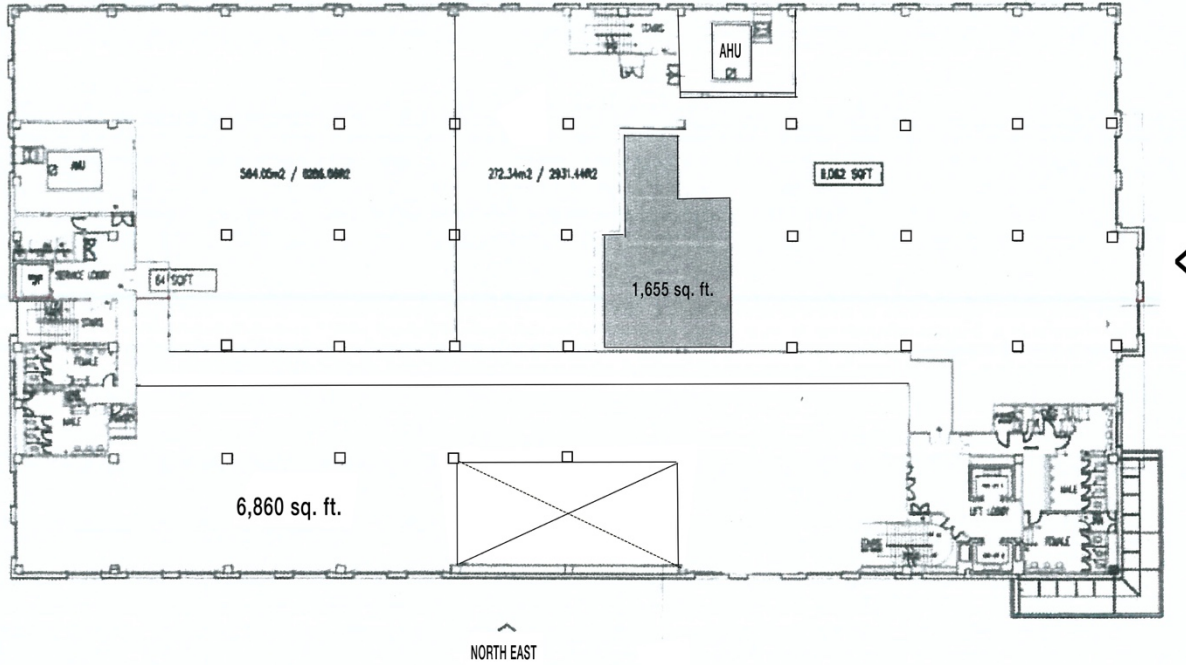
AVAILABLE LEVEL	SIZE sq. ft.	FURNISHING	RENTAL RATE	RENTAL, MYR
LEVEL 2	1,655	Partly Furnished	MYR 5.50	MYR 9,103
LEVEL 1	9,500	Partly Furnished	MYR 5.50	MYR 52,250



From the desk of Amy Ho

LEVEL 2 - 1,655 ft² unit

FLOOR PLAN



From the desk of Amy Ho

LEVEL 1 - 9,500 ft² unit



From the desk of Amy Ho



From the desk of Amy Ho

FLOOR PLAN

